

# Grocery Anchored Shop Space Available

## Tatum Ranch Crossing

NWC Cave Creek Rd & Tatum Blvd | Cave Creek, AZ



**Available:** ±1,307 SF to ±5,500 SF

**Rates:** Please call for rates

**Zoning:** Commercial

**Comments:** Tatum Ranch Crossing is a neighborhood shopping center located in the heart of the Tatum Ranch master-planned community, which includes 3,418 homes. Cave Creek Road and Tatum Boulevard are the two main arterials in north Phoenix, with Cave Creek Road carrying over 50,000 cars per day. Tatum Ranch Crossing is one of only two grocery anchored shopping centers serving this underserved trade area.

**Anchored By:** 

**Population:**

	1 Mile	3 Mile	5 Mile
2013 Estimate	6,638	24,793	54,467
2014 Projected	6,981	26,075	57,283

**Average HH Income:**

	1 Mile	3 Mile	5 Mile
2013 Estimate	\$107,828	\$107,239	\$113,596

**Traffic Counts:**

N:	±28,104 VPD (NB & SB)
S:	±32,657 VPD (NB & SB)
E:	±17,501 VPD (EB & WB)

\*ADOT 2011 / KSS Fuels 2012

[www.phoenixcommercialadvisors.com/listings/info/cavetatu.htm](http://www.phoenixcommercialadvisors.com/listings/info/cavetatu.htm)

 **PHOENIX COMMERCIAL ADVISORS**  
COMMERCIAL REAL ESTATE SERVICES

3131 East Camelback Road, Suite 340  
Phoenix, Arizona 85016  
Phone: 602-957-9800 Fax: 602-957-0889  
[www.phoenixcommercialadvisors.com](http://www.phoenixcommercialadvisors.com)

A MEMBER OF  
**CHAINLINKS**  
RETAIL ADVISORS

**Cameron Warren**  
602-288-3471  
[cwarren@pcaemail.com](mailto:cwarren@pcaemail.com)

**Torrey Briegel**  
602-734-7219  
[tbriegel@pcaemail.com](mailto:tbriegel@pcaemail.com)

The information contained herein has been obtained from sources believed reliable. While we do not doubt its accuracy, we have not verified it and make no guarantee, warranty or representation about it. It is your responsibility to independently confirm its accuracy and completeness. Any projections, opinions, assumptions or estimates used are for example only, and do not represent the current or future performance of the property. The value of this transaction to you depends on tax and other factors which should be evaluated by your tax, financial and legal advisors. You and your advisors should conduct a careful, independent investigation of the property to determine to your satisfaction the suitability of the property for your needs.

[36] DEC 11, 2014

# Grocery Anchored Shop Space Available

## Tatum Ranch Crossing

NWC Cave Creek Rd & Tatum Blvd | Cave Creek, AZ



Suite	Tenant	SF
100	Subway	1,261
106	Bellazza Salon	1,227
110	Tatum Ranch Crossing Chiropractic	1,234
112	Available	1,307
116	Trendy Nails	980
118	PostNet	980
120	SuperCuts	1,307
125	Safeway	55,456
130	Available	1,307
132	Allstate	980
134	Tenant	980
136	Abracadabra Pool Supplies	1,376
138	Tatum Ranch Dental	1,645
140	H & R Block	1,000
142	Available	1,500
29815	Jack in the Box	2,860
29822	New Tenant	5,520
29835	Safeway Gas	4,500
29844	Taco Bell	3,222
2984701	Available	3,037
298702	Available	2,500



site plan not drawn to scale

For more information, please contact

**Cameron Warren**  
602-288-3471  
cwarren@pcaemail.com

**Torrey Briegel**  
602-734-7219  
tbriegel@pcaemail.com



3131 E Camelback Rd, Ste 340 | Phoenix, AZ 85016  
Phone: 602-957-9800 | Fax: 602-957-0889  
www.phoenixcommercialadvisors.com

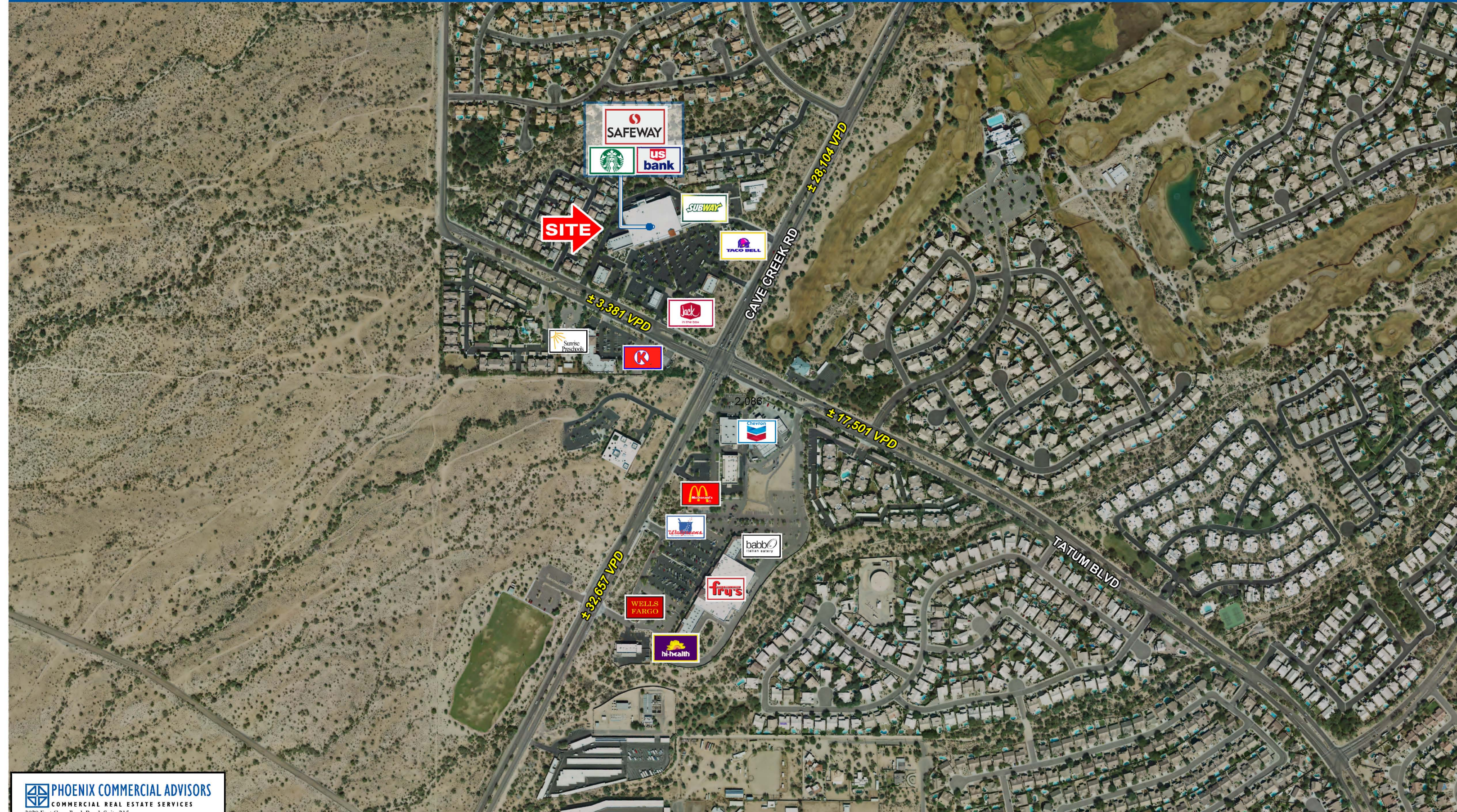
The information contained herein has been obtained from sources believed reliable. While we do not doubt its accuracy, we have not verified it and make no guarantee, warranty or representation about it. It is your responsibility to independently confirm its accuracy and completeness. Any projections, opinions, assumptions or estimates used are for example only, and do not represent the current or future performance of the property. The value of this transaction to you depends on tax and other factors which should be evaluated by your tax, financial and legal advisors. You and your advisors should conduct a careful, independent investigation of the property to determine to your satisfaction the suitability of the property for your needs.

[36] DEC 11, 2014

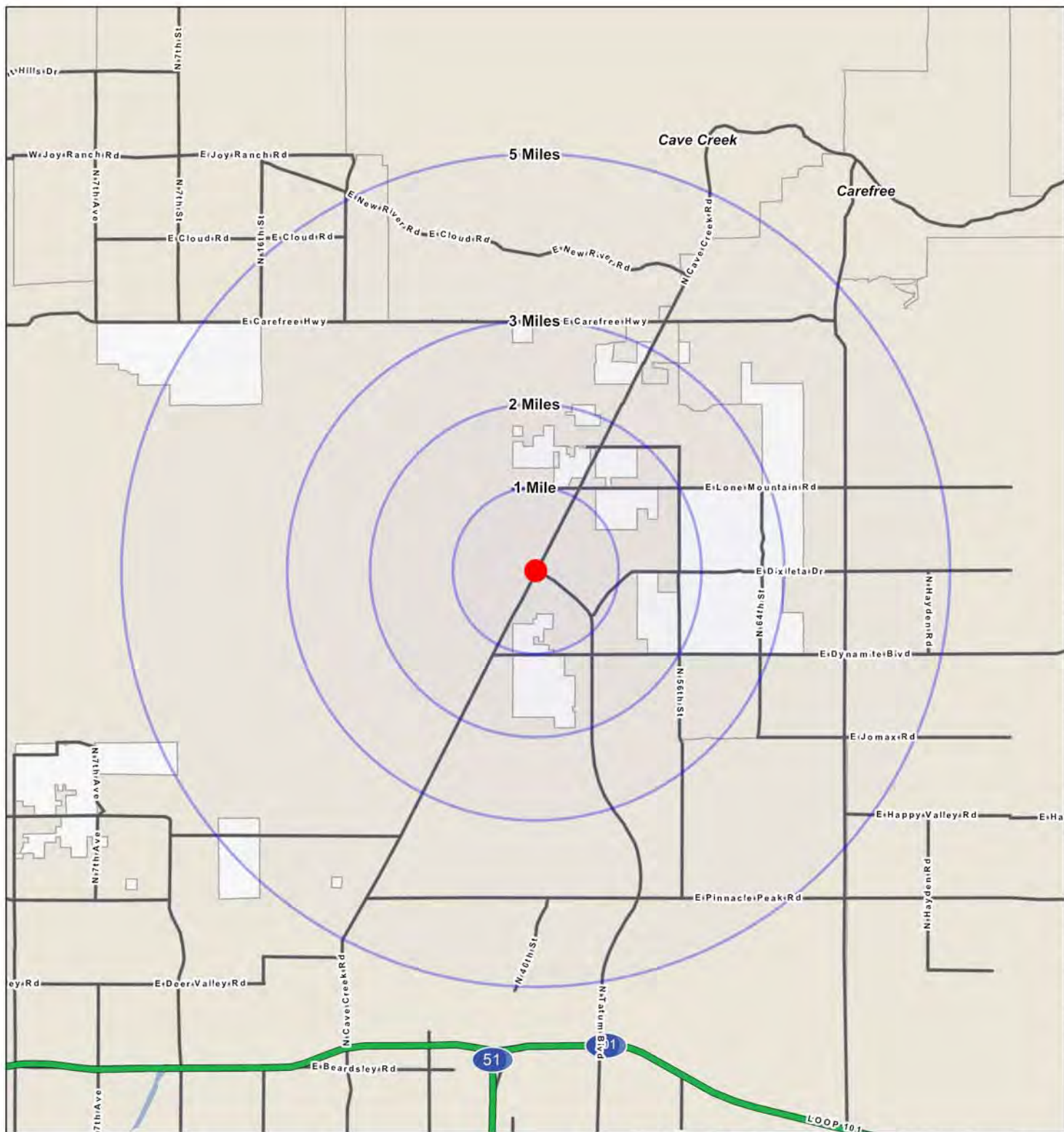


# TATUM BLVD & CAVE CREEK RD

## CAVE CREEK, ARIZONA







©2014, Sites USA Inc., Chandler, AZ (480) 491-1112. All Rights Reserved.

## Tatum Blvd & Cave Creek Rd Cave Creek, AZ

August 2014



Phoenix Commercial  
Advisors

**PHOENIX COMMERCIAL ADVISORS**  
COMMERCIAL REAL ESTATE SERVICES  
3020 East Camelback Road, Suite 215  
Phoenix, Arizona 85016  
(602) 957-9800  
A MEMBER OF  
**CHAINLINKS**  
RETAIL ADVISORS

# EXPANDED PROFILE

2000-2010 Census, 2013 Estimates with 2018 Projections

Calculated using Proportional Block Groups

Phoenix Commercial

Advisors

Lat/Lon: 33.7558/-111.9907

RF5

## Tatum Blvd & Cave Creek Rd

### Cave Creek, AZ

#### Population

	1 Mile	2 Miles	3 Miles	5 Miles
Estimated Population (2013)	6,638	14,403	24,793	54,467
Projected Population (2018)	6,981	15,147	26,075	57,283
Census Population (2010)	6,320	13,713	23,604	51,858
Census Population (2000)	6,594	11,931	18,439	34,730
Projected Annual Growth (2013 to 2018)	343 1.0%	744 1.0%	1,282 1.0%	2,815 1.0%
Historical Annual Growth (2010 to 2013)	318 1.7%	691 1.7%	1,189 1.7%	2,609 1.7%
Historical Annual Growth (2000 to 2010)	-274 -0.4%	1,782 1.5%	5,165 2.8%	17,128 4.9%
Estimated Population Density (2013)	2,115 psm	1,147 psm	877 psm	694 psm
Trade Area Size	3.14 sq mi	12.56 sq mi	28.26 sq mi	78.49 sq mi

#### Households

Estimated Households (2013)	2,665	5,542	9,386	21,058
Projected Households (2018)	2,814	5,853	9,914	22,243
Census Households (2010)	2,534	5,270	8,926	20,025
Census Households (2000)	2,484	4,474	6,873	13,376
Estimated Households with Children (2013)	912 34.2%	2,049 37.0%	3,571 38.0%	7,545 35.8%
Estimated Average Household Size (2013)	2.49	2.60	2.64	2.58

#### Average Household Income

Estimated Average Household Income (2013)	\$107,828	\$106,990	\$107,239	\$113,596
Projected Average Household Income (2018)	\$114,350	\$113,728	\$113,888	\$121,256
Estimated Average Family Income (2013)	\$123,738	\$120,559	\$120,500	\$130,609

#### Median Household Income

Estimated Median Household Income (2013)	\$93,665	\$91,816	\$89,399	\$89,612
Projected Median Household Income (2018)	\$101,365	\$99,613	\$97,124	\$97,955
Estimated Median Family Income (2013)	\$105,893	\$102,953	\$101,250	\$106,118

#### Per Capita Income

Estimated Per Capita Income (2013)	\$43,292	\$41,176	\$40,604	\$43,928
Projected Per Capita Income (2018)	\$46,100	\$43,952	\$43,308	\$47,092
Estimated Per Capita income 5 Year Growth	\$2,808 6.5%	\$2,777 6.7%	\$2,704 6.7%	\$3,165 7.2%
Estimated Average Household Net Worth (2013)	\$644,341	\$670,867	\$674,311	\$693,847

#### Daytime Demos (2013)

Total Businesses	214	416	669	1,621
Total Employees	1,457	2,264	3,836	13,633
Company Headquarter Businesses	1 0.4%	3 0.7%	3 0.4%	6 0.4%
Company Headquarter Employees	2 0.1%	5 0.2%	5 0.1%	108 0.8%
Employee Population per Business	6.8	5.4	5.7	8.4
Residential Population per Business	31.0	34.6	37.1	33.6

This report was produced using data from private and government sources deemed to be reliable. The information herein is provided without representation or warranty.

# EXPANDED PROFILE

2000-2010 Census, 2013 Estimates with 2018 Projections

Calculated using Proportional Block Groups

Phoenix Commercial

Advisors

Lat/Lon: 33.7558/-111.9907

RF5

## Tatum Blvd & Cave Creek Rd

### Cave Creek, AZ

#### Race & Ethnicity

	1 Mile		2 Miles		3 Miles		5 Miles	
White (2013)	6,189	93.2%	13,426	93.2%	23,083	93.1%	50,005	91.8%
Black or African American (2013)	72	1.1%	142	1.0%	219	0.9%	630	1.2%
American Indian or Alaska Native (2013)	24	0.4%	54	0.4%	96	0.4%	171	0.3%
Asian (2013)	153	2.3%	311	2.2%	549	2.2%	1,776	3.3%
Hawaiian or Pacific Islander (2013)	5	0.1%	6	-	10	-	33	0.1%
Other Race (2013)	64	1.0%	170	1.2%	310	1.3%	660	1.2%
Two or More Races (2013)	132	2.0%	292	2.0%	525	2.1%	1,193	2.2%
Not Hispanic or Latino Population (2013)	6,212	93.6%	13,542	94.0%	23,266	93.8%	51,051	93.7%
Hispanic or Latino Population (2013)	427	6.4%	861	6.0%	1,527	6.2%	3,417	6.3%
Not Hispanic or Latino Population (2018)	6,512	93.3%	14,199	93.7%	24,394	93.6%	53,521	93.4%
Hispanic or Latino Population (2018)	470	6.7%	948	6.3%	1,681	6.4%	3,762	6.6%
Not Hispanic or Latino Population (2010)	5,923	93.7%	12,911	94.2%	22,183	94.0%	48,678	93.9%
Hispanic or Latino Population (2010)	397	6.3%	801	5.8%	1,421	6.0%	3,180	6.1%
Not Hispanic or Latino Population (2000)	6,268	95.0%	11,342	95.1%	17,557	95.2%	33,098	95.3%
Hispanic or Latino Population (2000)	327	5.0%	588	4.9%	882	4.8%	1,633	4.7%
Projected Hispanic Annual Growth (2013 to 2018)	43	2.0%	87	2.0%	155	2.0%	345	2.0%
Historic Hispanic Annual Growth (2000 to 2013)	100	2.4%	273	3.6%	644	5.6%	1,784	8.4%

#### Age Distribution (2013)

	1 Mile		2 Miles		3 Miles		5 Miles	
Age Under 5	367	5.5%	851	5.9%	1,465	5.9%	3,297	6.1%
Age 5 to 9 Years	430	6.5%	1,028	7.1%	1,832	7.4%	3,908	7.2%
Age 10 to 14 Years	493	7.4%	1,123	7.8%	1,980	8.0%	3,995	7.3%
Age 15 to 19 Years	386	5.8%	853	5.9%	1,481	6.0%	3,093	5.7%
Age 20 to 24 Years	205	3.1%	451	3.1%	801	3.2%	1,806	3.3%
Age 25 to 29 Years	244	3.7%	509	3.5%	862	3.5%	2,228	4.1%
Age 30 to 34 Years	349	5.3%	737	5.1%	1,242	5.0%	2,973	5.5%
Age 35 to 39 Years	474	7.1%	1,085	7.5%	1,857	7.5%	4,009	7.4%
Age 40 to 44 Years	580	8.7%	1,324	9.2%	2,302	9.3%	4,743	8.7%
Age 45 to 49 Years	598	9.0%	1,305	9.1%	2,253	9.1%	4,544	8.3%
Age 50 to 54 Years	578	8.7%	1,186	8.2%	2,032	8.2%	4,274	7.8%
Age 55 to 59 Years	539	8.1%	1,117	7.8%	1,943	7.8%	4,033	7.4%
Age 60 to 64 Years	435	6.6%	953	6.6%	1,636	6.6%	3,730	6.8%
Age 65 to 74 Years	607	9.1%	1,235	8.6%	2,065	8.3%	5,185	9.5%
Age 75 to 84 Years	274	4.1%	491	3.4%	786	3.2%	2,012	3.7%
Age 85 Years or Over	82	1.2%	154	1.1%	255	1.0%	636	1.2%
Median Age	42.2		41.3		41.1		41.5	

#### Gender Age Distribution (2013)

	1 Mile		2 Miles		3 Miles		5 Miles	
Female Population	3,465	52.2%	7,412	51.5%	12,732	51.4%	27,963	51.3%
Age 0 to 19 Years	812	23.5%	1,898	25.6%	3,339	26.2%	7,058	25.2%
Age 20 to 64 Years	2,132	61.5%	4,531	61.1%	7,788	61.2%	16,874	60.3%
Age 65 Years or Over	520	15.0%	983	13.3%	1,604	12.6%	4,030	14.4%
Female Median Age	42.9		41.6		41.3		41.6	
Male Population	3,174	47.8%	6,992	48.5%	12,061	48.6%	26,504	48.7%
Age 0 to 19 Years	863	27.2%	1,957	28.0%	3,419	28.3%	7,235	27.3%
Age 20 to 64 Years	1,869	58.9%	4,137	59.2%	7,140	59.2%	15,467	58.4%
Age 65 Years or Over	442	13.9%	897	12.8%	1,502	12.5%	3,802	14.3%
Male Median Age	41.3		40.9		40.8		41.3	

This report was produced using data from private and government sources deemed to be reliable. The information herein is provided without representation or warranty.

# EXPANDED PROFILE

2000-2010 Census, 2013 Estimates with 2018 Projections

Calculated using Proportional Block Groups

Phoenix Commercial

Advisors

Lat/Lon: 33.7558/-111.9907

RF5

## Tatum Blvd & Cave Creek Rd

### Cave Creek, AZ

#### Household Income Distribution (2013)

	1 Mile		2 Miles		3 Miles		5 Miles	
HH Income \$200,000 or More	305	11.5%	684	12.3%	1,132	12.1%	2,986	14.2%
HH Income \$150,000 to \$199,999	314	11.8%	660	11.9%	1,062	11.3%	2,388	11.3%
HH Income \$100,000 to \$149,999	614	23.0%	1,118	20.2%	1,873	20.0%	3,830	18.2%
HH Income \$75,000 to \$99,999	321	12.1%	653	11.8%	1,163	12.4%	2,546	12.1%
HH Income \$50,000 to \$74,999	488	18.3%	1,067	19.2%	1,818	19.4%	3,715	17.6%
HH Income \$35,000 to \$49,999	307	11.5%	582	10.5%	1,100	11.7%	2,370	11.3%
HH Income \$25,000 to \$34,999	111	4.2%	297	5.4%	474	5.1%	1,200	5.7%
HH Income \$15,000 to \$24,999	51	1.9%	190	3.4%	290	3.1%	1,094	5.2%
HH Income Under \$15,000	156	5.8%	292	5.3%	474	5.0%	929	4.4%
HH Income \$35,000 or More	2,348	88.1%	4,763	85.9%	8,149	86.8%	17,835	84.7%
HH Income \$75,000 or More	1,554	58.3%	3,115	56.2%	5,230	55.7%	11,750	55.8%

#### Housing (2013)

Total Housing Units	2,794		5,789		9,820		23,099	
Housing Units Occupied	2,665	95.4%	5,542	95.7%	9,386	95.6%	21,058	91.2%
Housing Units Owner-Occupied	2,318	87.0%	4,843	87.4%	8,218	87.6%	18,226	86.6%
Housing Units, Renter-Occupied	347	13.0%	699	12.6%	1,168	12.4%	2,832	13.4%
Housing Units, Vacant	129	4.6%	247	4.3%	433	4.4%	2,041	8.8%

#### Marital Status (2013)

Never Married	1,134	21.2%	2,454	21.5%	4,111	21.1%	9,083	21.0%
Currently Married	3,281	61.4%	7,151	62.7%	12,192	62.5%	26,907	62.2%
Separated	143	2.7%	252	2.2%	391	2.0%	761	1.8%
Widowed	171	3.2%	423	3.7%	676	3.5%	1,683	3.9%
Divorced	619	11.6%	1,120	9.8%	2,147	11.0%	4,832	11.2%

#### Household Type (2013)

Population Family	5,609	84.5%	12,380	86.0%	21,463	86.6%	46,557	85.5%
Population Non-Family	1,025	15.4%	2,013	14.0%	3,317	13.4%	7,853	14.4%
Population Group Quarters	4	0.1%	10	0.1%	12	-	57	0.1%
Family Households	1,975	74.1%	4,239	76.5%	7,278	77.5%	15,948	75.7%
Non-Family Households	689	25.9%	1,303	23.5%	2,108	22.5%	5,110	24.3%
Married Couple with Children	666	20.3%	1,575	22.0%	2,803	23.0%	6,017	22.4%
Average Family Household Size	2.8		2.9		2.9		2.9	

#### Household Size (2013)

1 Person Households	542	20.3%	1,024	18.5%	1,651	17.6%	4,005	19.0%
2 Person Households	1,108	41.6%	2,217	40.0%	3,688	39.3%	8,477	40.3%
3 Person Households	405	15.2%	872	15.7%	1,538	16.4%	3,296	15.7%
4 Person Households	446	16.7%	1,003	18.1%	1,741	18.5%	3,552	16.9%
5 Person Households	121	4.5%	308	5.6%	545	5.8%	1,227	5.8%
6 or More Person Households	42	1.6%	118	2.1%	223	2.4%	502	2.4%

#### Household Vehicles (2013)

Households with 0 Vehicles Available	51	1.9%	62	1.1%	82	0.9%	261	1.2%
Households with 1 Vehicles Available	610	22.9%	1,130	20.4%	2,024	21.6%	4,949	23.5%
Households with 2 or More Vehicles Available	2,004	75.2%	4,350	78.5%	7,281	77.6%	15,847	75.3%
Total Vehicles Available	5,240		11,266		19,362		42,730	
Average Vehicles Per Household	2.0		2.0		2.1		2.0	

This report was produced using data from private and government sources deemed to be reliable. The information herein is provided without representation or warranty.

# EXPANDED PROFILE

2000-2010 Census, 2013 Estimates with 2018 Projections

Calculated using Proportional Block Groups

Phoenix Commercial

Advisors

Lat/Lon: 33.7558/-111.9907

RF5

## Tatum Blvd & Cave Creek Rd

### Cave Creek, AZ

#### Labor Force (2013)

	1 Mile	2 Miles	3 Miles	5 Miles
Estimated Labor Population Age 16 Years or Over	5,262	11,188	19,145	42,459
Estimated Civilian Employed	3,613 68.7%	7,589 67.8%	12,992 67.9%	27,635 65.1%
Estimated Civilian Unemployed	211 4.0%	382 3.4%	578 3.0%	1,254 3.0%
Estimated in Armed Forces	1 -	1 -	1 -	7 -
Estimated Not in Labor Force	1,437 27.3%	3,216 28.7%	5,575 29.1%	13,563 31.9%
Unemployment Rate	4.0%	3.4%	3.0%	3.0%

#### Occupation (2010)

	1 Mile	2 Miles	3 Miles	5 Miles
Occupation: Population Age 16 Years or Over	3,118	6,703	11,640	24,736
Management, Business, Financial Operations	789 25.3%	1,646 24.6%	2,839 24.4%	6,278 25.4%
Professional, Related	750 24.0%	1,580 23.6%	2,768 23.8%	6,015 24.3%
Service	414 13.3%	916 13.7%	1,538 13.2%	3,191 12.9%
Sales, Office	872 28.0%	1,850 27.6%	3,390 29.1%	7,165 29.0%
Farming, Fishing, Forestry	1 -	3 -	6 0.1%	14 0.1%
Construct, Extraction, Maintenance	68 2.2%	193 2.9%	341 2.9%	750 3.0%
Production, Transport Material Moving	224 7.2%	515 7.7%	758 6.5%	1,323 5.3%
White Collar Workers	77.3%	75.7%	77.3%	78.7%
Blue Collar Workers	22.7%	24.3%	22.7%	21.3%

#### Consumer Expenditure (2013)

	1 Mile	2 Miles	3 Miles	5 Miles
Total Household Expenditure	\$200 M	\$413 M	\$700 M	\$1.63 B
Total Non-Retail Expenditure	\$116 M 57.9%	\$239 M 57.9%	\$406 M 57.9%	\$943 M 57.9%
Total Retail Expenditure	\$84.1 M 42.1%	\$174 M 42.1%	\$295 M 42.1%	\$686 M 42.1%
Apparel	\$9.66 M 4.8%	\$20.0 M 4.8%	\$33.9 M 4.8%	\$79.0 M 4.8%
Contributions	\$8.76 M 4.4%	\$18.3 M 4.4%	\$30.7 M 4.4%	\$73.2 M 4.5%
Education	\$5.61 M 2.8%	\$11.6 M 2.8%	\$19.5 M 2.8%	\$45.9 M 2.8%
Entertainment	\$11.3 M 5.7%	\$23.5 M 5.7%	\$39.8 M 5.7%	\$92.6 M 5.7%
Food and Beverages	\$29.3 M 14.6%	\$60.6 M 14.7%	\$103 M 14.7%	\$238 M 14.6%
Furnishings and Equipment	\$9.21 M 4.6%	\$19.0 M 4.6%	\$32.2 M 4.6%	\$74.9 M 4.6%
Gifts	\$6.00 M 3.0%	\$12.4 M 3.0%	\$20.9 M 3.0%	\$49.2 M 3.0%
Health Care	\$11.3 M 5.6%	\$23.3 M 5.6%	\$39.6 M 5.7%	\$91.9 M 5.6%
Household Operations	\$7.93 M 4.0%	\$16.4 M 4.0%	\$27.8 M 4.0%	\$65.1 M 4.0%
Miscellaneous Expenses	\$3.19 M 1.6%	\$6.56 M 1.6%	\$11.1 M 1.6%	\$25.8 M 1.6%
Personal Care	\$2.84 M 1.4%	\$5.87 M 1.4%	\$9.96 M 1.4%	\$23.1 M 1.4%
Personal Insurance	\$2.30 M 1.2%	\$4.78 M 1.2%	\$8.06 M 1.2%	\$19.0 M 1.2%
Reading	\$660 K 0.3%	\$1.36 M 0.3%	\$2.30 M 0.3%	\$5.37 M 0.3%
Shelter	\$39.2 M 19.6%	\$81.1 M 19.6%	\$137 M 19.6%	\$319 M 19.6%
Tobacco	\$1.06 M 0.5%	\$2.20 M 0.5%	\$3.76 M 0.5%	\$8.65 M 0.5%
Transportation	\$38.7 M 19.4%	\$79.9 M 19.3%	\$136 M 19.4%	\$313 M 19.2%
Utilities	\$12.8 M 6.4%	\$26.5 M 6.4%	\$45.0 M 6.4%	\$104 M 6.4%

#### Educational Attainment (2013)

	1 Mile	2 Miles	3 Miles	5 Miles
Adult Population Age 25 Years or Over	4,755	10,088	17,224	38,317
Elementary (Grade Level 0 to 8)	66 1.4%	106 1.1%	152 0.9%	382 1.0%
Some High School (Grade Level 9 to 11)	47 1.0%	171 1.7%	287 1.7%	712 1.9%
High School Graduate	871 18.3%	1,627 16.1%	2,703 15.7%	5,959 15.6%
Some College	986 20.7%	2,229 22.1%	3,886 22.6%	8,392 21.9%
Associate Degree Only	504 10.6%	913 9.1%	1,519 8.8%	3,152 8.2%
Bachelor Degree Only	1,509 31.7%	3,486 34.6%	6,148 35.7%	13,444 35.1%
Graduate Degree	773 16.3%	1,555 15.4%	2,531 14.7%	6,277 16.4%

This report was produced using data from private and government sources deemed to be reliable. The information herein is provided without representation or warranty.



# EXPANDED PROFILE

2000-2010 Census, 2013 Estimates with 2018 Projections

Calculated using Proportional Block Groups

Phoenix Commercial

Advisors

Lat/Lon: 33.7558/-111.9907

RF5

## Tatum Blvd & Cave Creek Rd

### Cave Creek, AZ

#### Units In Structure (2010)

	1 Mile		2 Miles		3 Miles		5 Miles	
1 Detached Unit	2,340	92.3%	4,868	92.4%	8,162	91.4%	17,439	87.1%
1 Attached Unit	81	3.2%	145	2.8%	212	2.4%	732	3.7%
2 to 4 Units	50	2.0%	78	1.5%	160	1.8%	359	1.8%
5 to 9 Units	14	0.5%	35	0.7%	113	1.3%	306	1.5%
10 to 19 Units	2	0.1%	9	0.2%	16	0.2%	152	0.8%
20 to 49 Units	1	-	4	0.1%	8	0.1%	112	0.6%
50 or More Units	4	0.1%	11	0.2%	23	0.3%	150	0.8%
Mobile Home or Trailer	41	1.6%	100	1.9%	206	2.3%	741	3.7%
Other Structure	2	0.1%	20	0.4%	26	0.3%	34	0.2%

#### Homes Built By Year (2010)

Homes Built 2005 or later	134	5.3%	360	6.8%	698	7.8%	3,194	16.0%
Homes Built 2000 to 2004	172	6.8%	733	13.9%	1,641	18.4%	3,539	17.7%
Homes Built 1990 to 1999	1,784	70.4%	3,120	59.2%	4,601	51.5%	9,265	46.3%
Homes Built 1980 to 1989	233	9.2%	515	9.8%	1,005	11.3%	2,004	10.0%
Homes Built 1970 to 1979	111	4.4%	312	5.9%	595	6.7%	1,173	5.9%
Homes Built 1960 to 1969	57	2.3%	113	2.1%	191	2.1%	414	2.1%
Homes Built 1950 to 1959	31	1.2%	84	1.6%	139	1.6%	317	1.6%
Homes Built Before 1949	12	0.5%	32	0.6%	55	0.6%	120	0.6%

#### Home Values (2010)

Home Values \$1,000,000 or More	21	1.0%	72	1.6%	148	1.9%	622	3.6%
Home Values \$500,000 to \$999,999	220	10.0%	619	13.5%	1,171	15.1%	2,770	16.1%
Home Values \$400,000 to \$499,999	253	11.5%	470	10.3%	772	9.9%	1,575	9.1%
Home Values \$300,000 to \$399,999	388	17.7%	716	15.6%	1,205	15.5%	2,209	12.8%
Home Values \$200,000 to \$299,999	422	19.2%	869	19.0%	1,412	18.2%	3,024	17.5%
Home Values \$150,000 to \$199,999	315	14.4%	584	12.7%	943	12.1%	2,095	12.2%
Home Values \$100,000 to \$149,999	262	11.9%	556	12.1%	962	12.4%	2,153	12.5%
Home Values \$70,000 to \$99,999	127	5.8%	270	5.9%	467	6.0%	1,104	6.4%
Home Values \$50,000 to \$69,999	70	3.2%	165	3.6%	259	3.3%	651	3.8%
Home Values \$25,000 to \$49,999	52	2.4%	114	2.5%	192	2.5%	481	2.8%
Home Values Under \$25,000	63	2.9%	148	3.2%	248	3.2%	558	3.2%
Owner-Occupied Median Home Value	\$252,353		\$256,940		\$262,758		\$253,500	
Renter-Occupied Median Rent	\$1,203		\$1,248		\$1,216		\$1,190	

#### Transportation To Work (2010)

Drive to Work Alone	2,501	81.8%	5,092	78.6%	8,783	77.7%	18,680	77.5%
Drive to Work in Carpool	176	5.8%	462	7.1%	871	7.7%	1,801	7.5%
Travel to Work by Public Transportation	23	0.8%	39	0.6%	65	0.6%	151	0.6%
Drive to Work on Motorcycle	5	0.2%	44	0.7%	53	0.5%	76	0.3%
Walk or Bicycle to Work	24	0.8%	92	1.4%	144	1.3%	322	1.3%
Other Means	16	0.5%	71	1.1%	97	0.9%	219	0.9%
Work at Home	311	10.2%	676	10.4%	1,294	11.4%	2,860	11.9%

#### Travel Time (2010)

Travel to Work in 14 Minutes or Less	458	16.7%	869	15.0%	1,389	13.9%	3,329	15.7%
Travel to Work in 15 to 29 Minutes	1,004	36.6%	2,222	38.3%	3,825	38.2%	8,498	40.0%
Travel to Work in 30 to 59 Minutes	1,130	41.1%	2,489	42.9%	4,379	43.7%	8,515	40.1%
Travel to Work in 60 Minutes or More	154	5.6%	219	3.8%	421	4.2%	906	4.3%
Average Minutes Travel to Work	27.4		27.6		27.5		26.3	

This report was produced using data from private and government sources deemed to be reliable. The information herein is provided without representation or warranty.